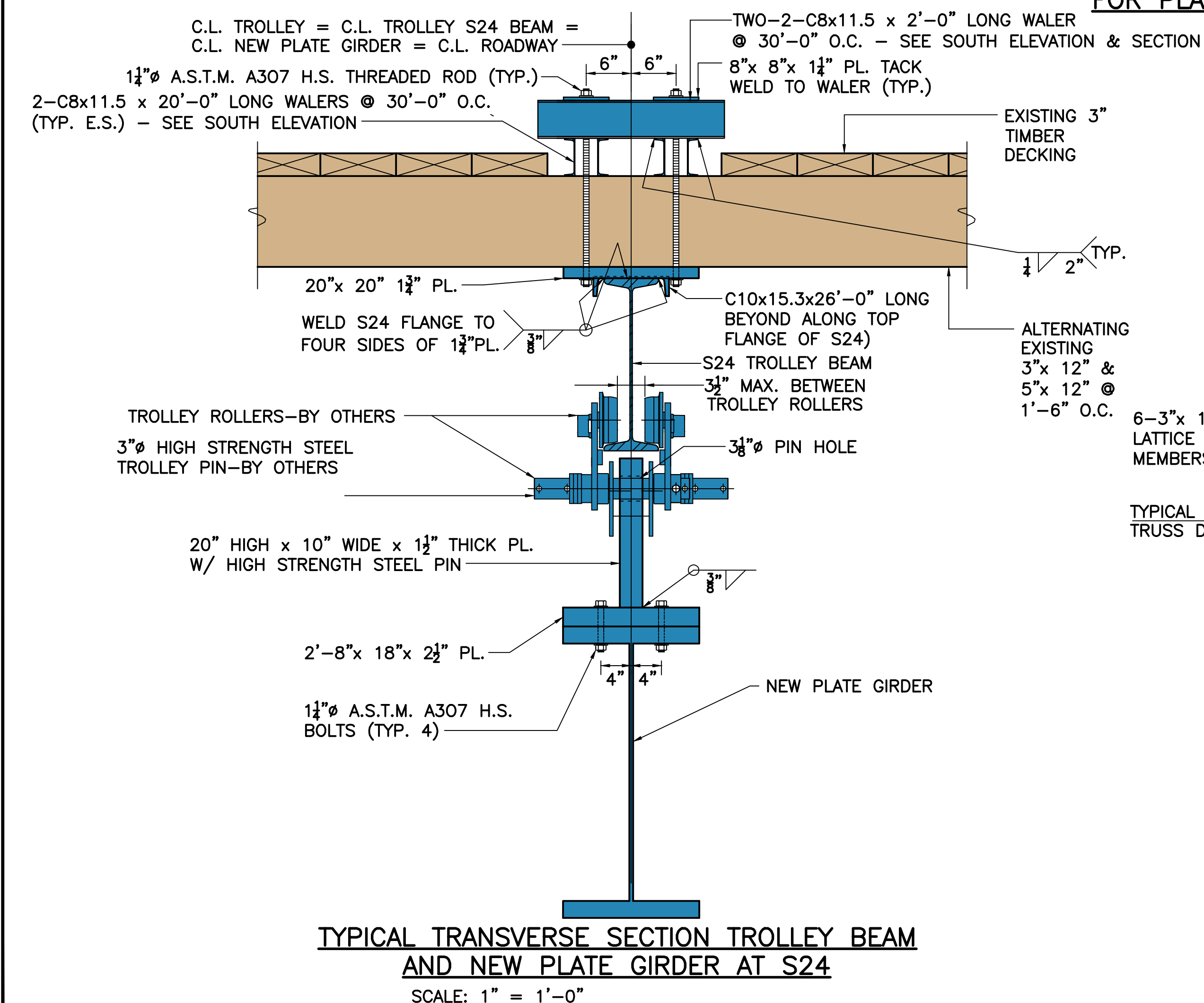
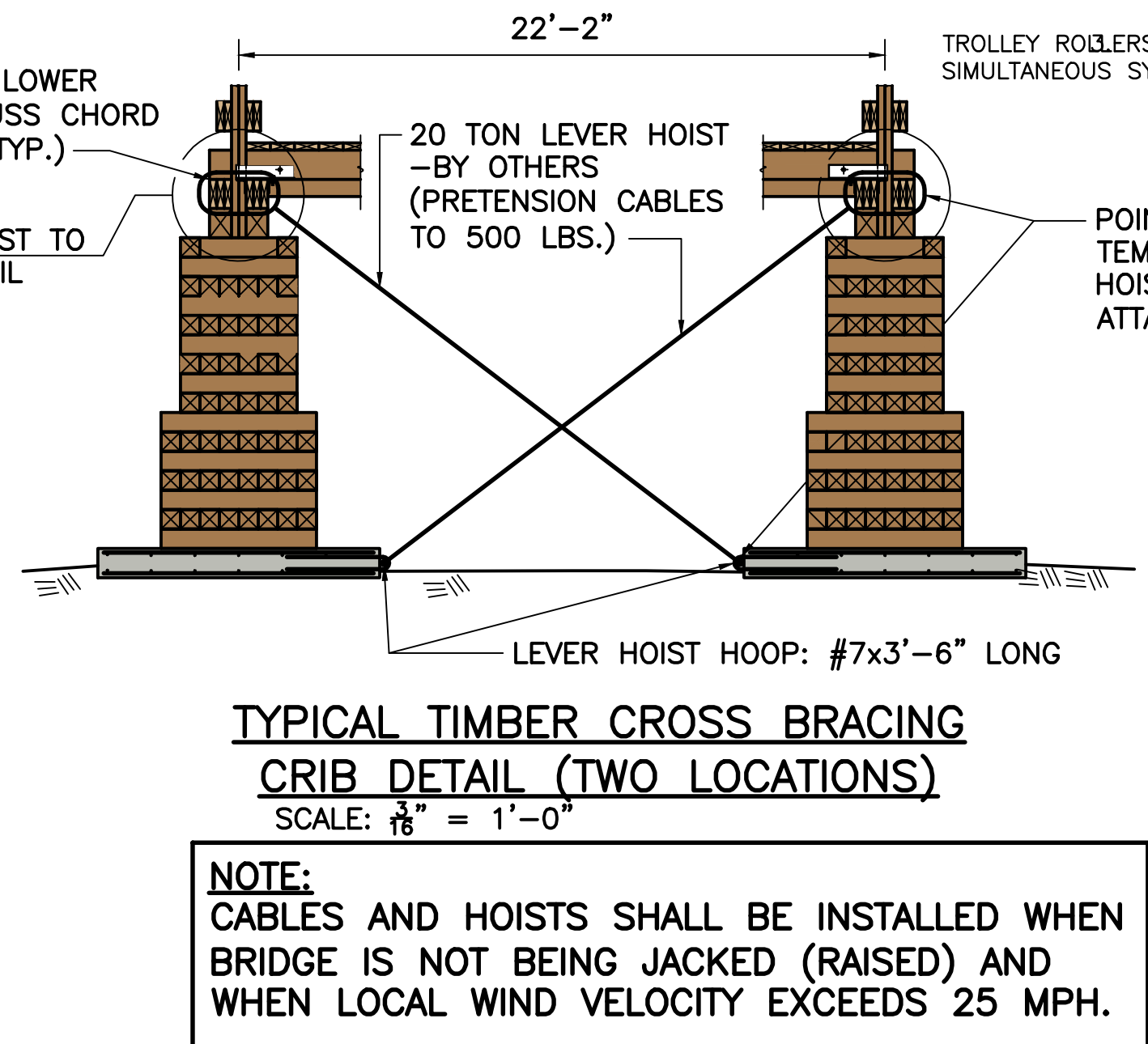


NOTE:
BRIDGE SHALL NOT BE JACKED (RAISED) WHEN LOCAL WIND VELOCITY EXCEEDS 25 MPH. PROVIDE SCOUR PROTECTION UNDER ALL TEMPORARY PIERS DURING STORM EVENTS BY OTHERS.

EXISTING TIMBER COVERED BRIDGE - SOUTH JACKED (RAISED) ELEVATION BRIDGE FOR PLACEMENT OF NEW STEEL GIRDERS (NORTH ELEVATION SIM.-OPP. HAND) CONTINUOUS S24 TROLLEY BEAM NOT SHOWN FOR CLARITY
SCALE: 3/32" = 1'-0"



- NOTES:**
- SIMULTANEOUSLY JACK (RAISE) EAST END (TWO CORNERS) OF EXISTING BRIDGE TRUSSES 8 INCHES VERTICALLY WITH A HYDRAULIC JACK OF A 50 TON RATED CAPACITY. STOP. INSTALL CRIBBING AND BLOCKING UNDER BRIDGE TRUSSES ALONG EAST END (TWO CORNERS) AS SHOWN. STOP. REMOVE HYDRAULIC JACKS ALONG EAST END (TWO CORNERS) AND RELOCATE AND INSTALL TO WEST END (TWO CORNERS). STOP. SIMULTANEOUSLY JACK (RAISE) WEST END (TWO CORNERS) OF EXISTING BRIDGE TRUSSES VERTICALLY 8 INCHES WITH HYDRAULIC JACK OF A 50 TON RATED CAPACITY. STOP. INSTALL CRIBBING AND BLOCKING UNDER BRIDGE TRUSSES ALONG WEST END (TWO CORNERS) AS SHOWN. STOP. JACK (RAISE) WEST END (TWO CORNERS) OF EXISTING BRIDGE TRUSSES AN ADDITIONAL 8 INCHES VERTICALLY WITH A HYDRAULIC JACK OF 50 TON RATED CAPACITY. STOP. INSTALL CRIBBING AND BLOCKING UNDER BRIDGE TRUSSES ALONG WEST END (TWO CORNERS) AS SHOWN. STOP. REPEAT THIS ALTERNATE JACKING PROCEDURE OF RAISING ONE END OF THE BRIDGE AT A TIME WHILE THE OPPOSITE END OF THE BRIDGE REMAINS SEATED ON THE TWO CRIBS (NOT JACKS) UNTIL THE BRIDGE IS RAISED TO THE HORIZONTALLY LEVEL POSITION AS INDICATED ABOVE TO RECEIVE THE NEW PLATE GIRDERS. STOP. INSTALL S24x15.3 TROLLEY BEAM THEN INDIVIDUALLY INSTALL EACH NEW PLATE GIRDER ALONG TROLLEY BEAM AS PER CONTRACT PLANS AND CONTRACTORS CONSTRUCTION PROCEDURES.
- TROLLEY ROLLERS SHALL BE CAPABLE OF TRANSPORTING HORIZONTALLY A MINIMUM 20 TON (40 KIP) LOAD-BY OTHERS. HYDRAULIC JACKS, FITTINGS, HYDRAULIC LINES, SIMULTANEOUS SYNCHRONIZATION MANIFOLDS AND OTHER EQUIPMENT, ETC. - BY OTHERS.



MARCH 2, 2010	ACCEPTED FOR CONSTRUCTION
PROPOSED TEMPORARY SUPPORT OF SUPERSTRUCTURE HARDWICK-WARE BRIDGE STREET OVER WARE RIVER MASSACHUSETTS DEPARTMENT OF TRANSPORTATION HIGHWAY DIVISION 10 PARK PLAZA BOSTON, MASS	
JDB Consulting Engineers 835 Samoset Rd., Eastham, MA 02642	