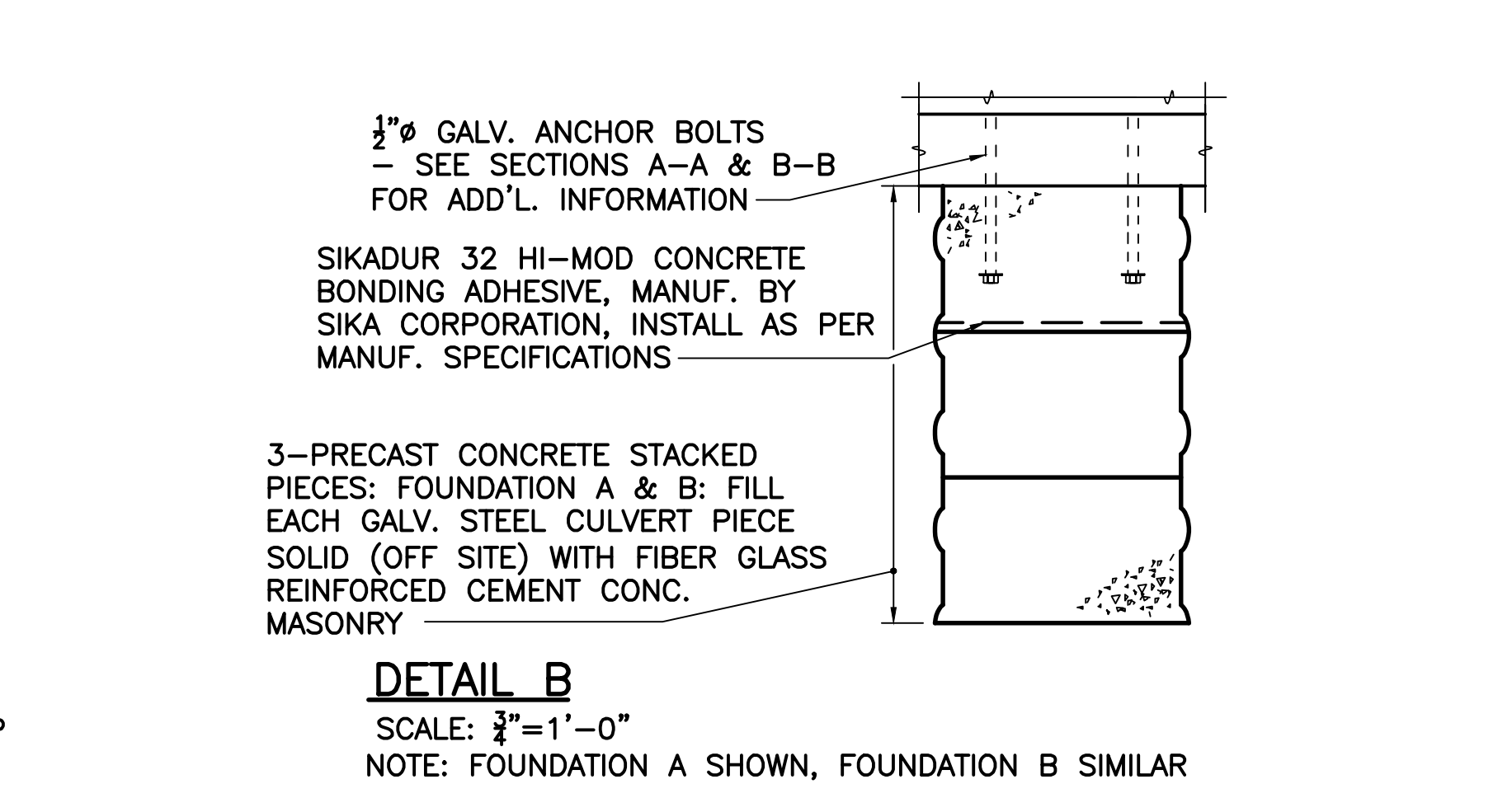
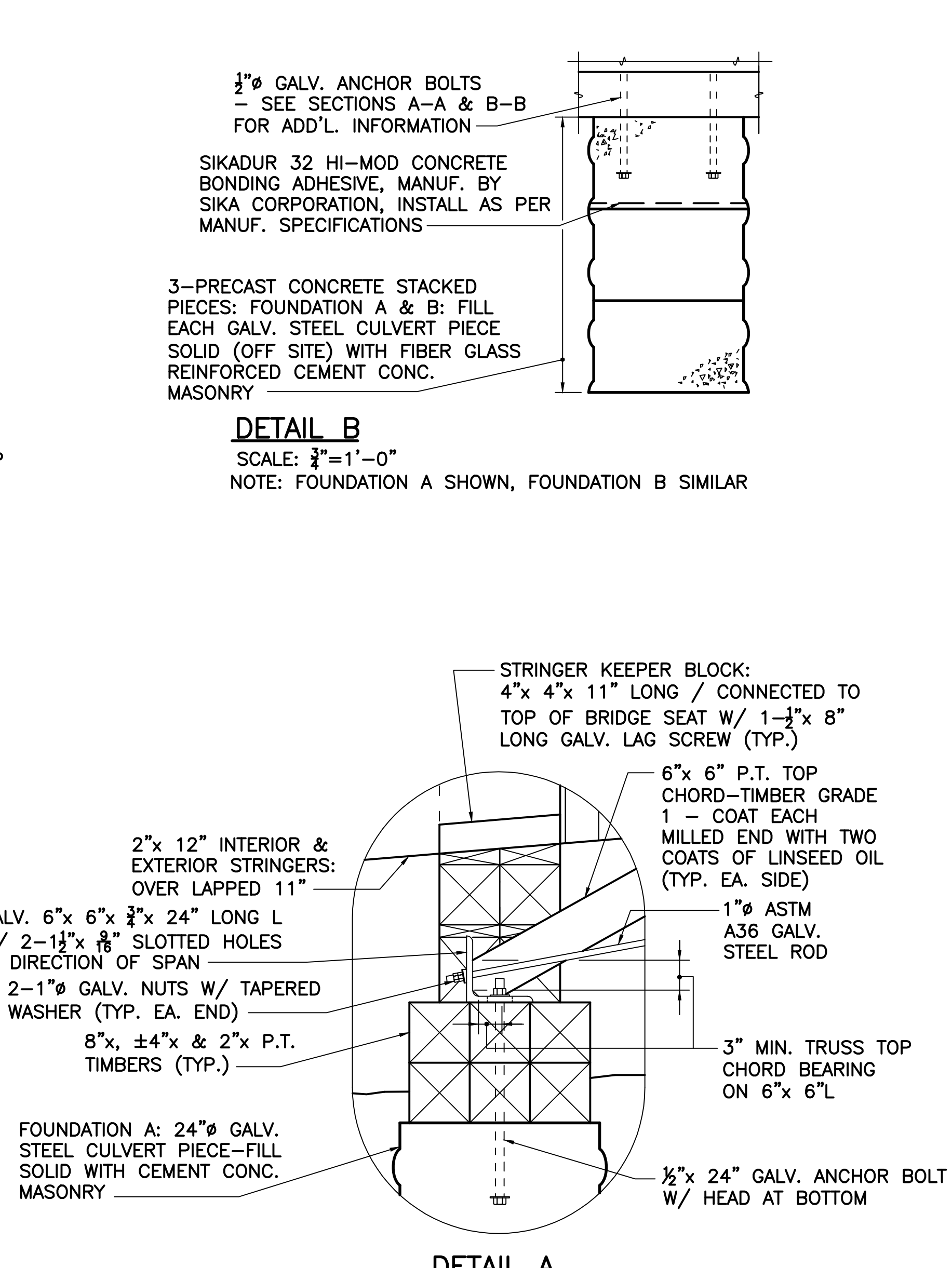
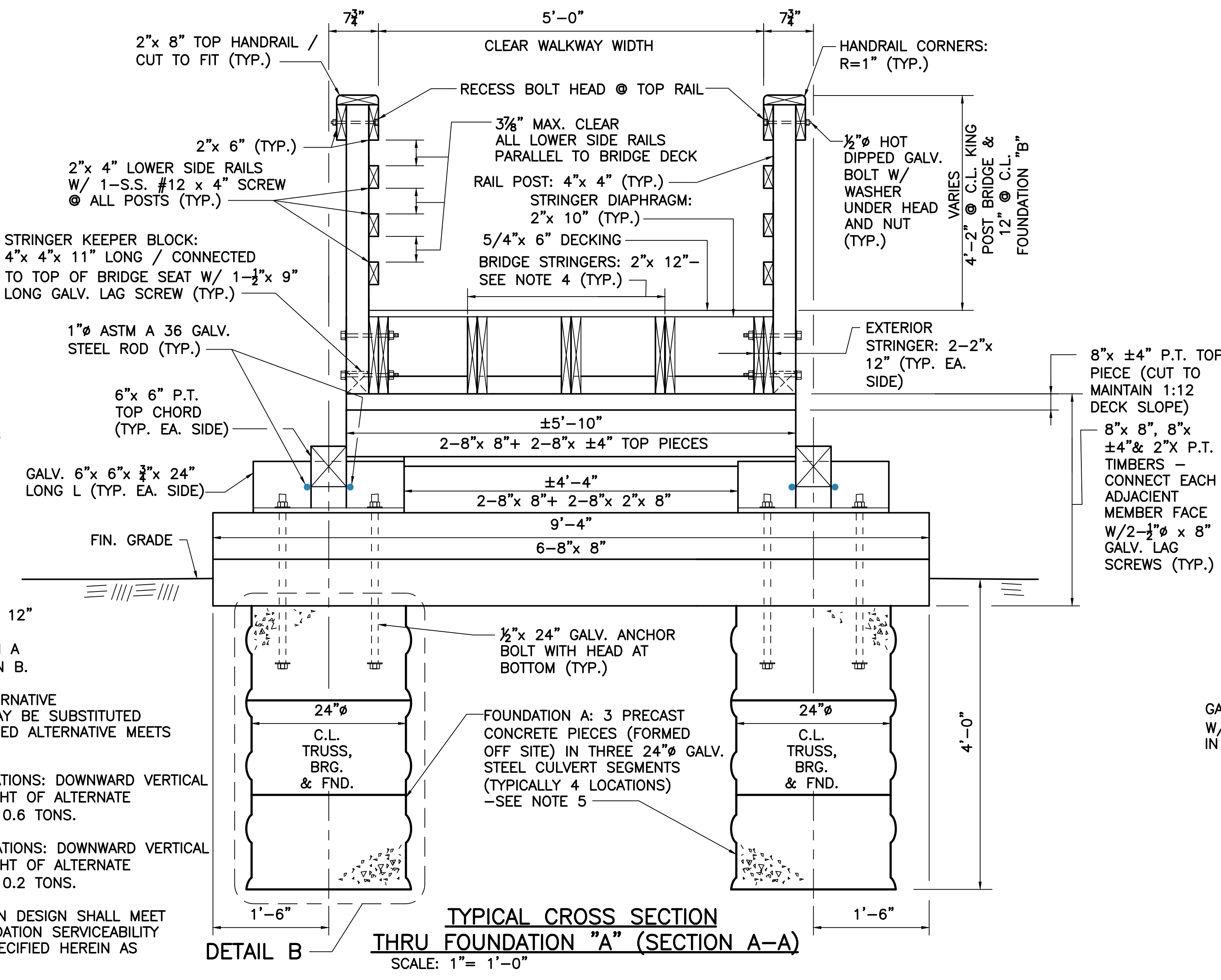
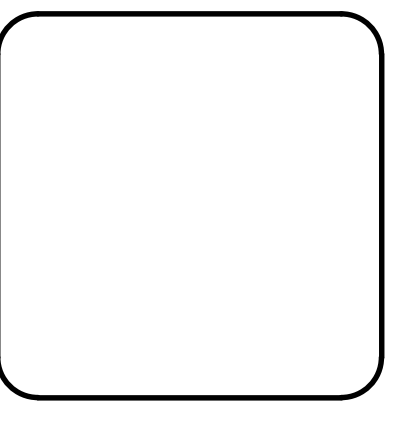


- NOTES:**
- ALL BOLTS HOLES SHALL BE PREDRILLED 1/2" TO 3/8" LARGER THAN BOLT SHANK. DO NOT FORCE (DRIVE) BOLTS INTO PREDRILLED BOLTS HOLES.
  - BRIDGE SHALL BE LOCATED ALONG THE C.L. OF THE EXISTING FOOT PATH AS DETERMINED BY THE ENGINEER. ALL DEBRIS, SOIL SPOILS DURING FOUNDATION PLACEMENT AND UNUSED CONCRETE SHALL BE REMOVED FROM SITE AT THE END OF EACH WORKING DAY.
  - + - INDICATES 1/2" HOT DIPPED GALV. THRU BOLT W/WASHER UNDER HEAD AND NUT LOCATED AT THE C.L. OF EACH CONNECTING MEMBER UNLESS NOTED OTHERWISE.
  - STRINGER FRAMING: KING POST TRUSS AND APPROACH SPANS 3-2" x 12" EVENLY SPACED BETWEEN EXTERIOR STRINGERS. OVER LAP ALL STRINGERS 11" OVER FOUNDATION A & EXTEND ALL STRINGERS 11" OVER FOUNDATION B.
  - UPON FINAL APPROVAL BY THE ENGINEER AN ALTERNATIVE SUBSTRUCTURE DESIGNED BY THE CONTRACTOR MAY BE SUBSTITUTED FOR FOUNDATIONS A & B PROVIDING THE PROPOSED ALTERNATIVE MEETS OR EXCEEDS THE FOLLOWING:
    - APPLIED LOADS FOR FOUNDATION A—FOUR LOCATIONS: DOWNWARD VERTICAL LOAD OF 2.0 TONS (NOT INCLUDING DEAD WEIGHT OF ALTERNATE FOUNDATION) & LATERAL HORIZONTAL LOAD OF 0.6 TONS.
    - APPLIED LOADS FOR FOUNDATION B—FOUR LOCATIONS: DOWNWARD VERTICAL LOAD OF 0.9 TONS (NOT INCLUDING DEAD WEIGHT OF ALTERNATE FOUNDATION) & LATERAL HORIZONTAL LOAD OF 0.2 TONS.
  - FINAL APPROVAL OF THE ALTERNATE FOUNDATION DESIGN SHALL MEET BUT IS NOT LIMITED TO THE LONG TERM FOUNDATION SERVICEABILITY AND MATERIAL QUALITY OF THE FOUNDATION SPECIFIED HEREIN AS DETERMINED BY THE ENGINEER.

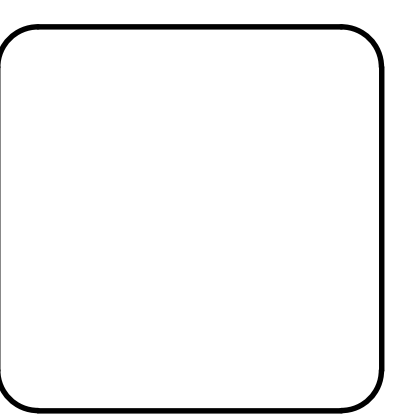


NO.	DATE	BY	REVISION DESCRIPTION



**Town of Eastham**  
Eastham, MA  
Sheet 1 of 2 Sheets

**JDB Consulting Engineers**  
835 Samsot Rd., Eastham, MA 02642



**ADA Pedestrian Bridge over Connecting Stream Great & Bridge Ponds**

PROJ. NO. 0609  
CHECKED BY: JDB  
DRAWN BY: JDB  
DATE: 3.13.06

